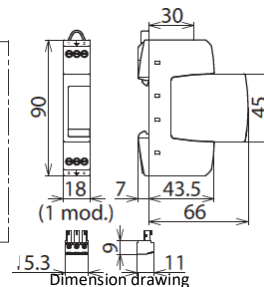
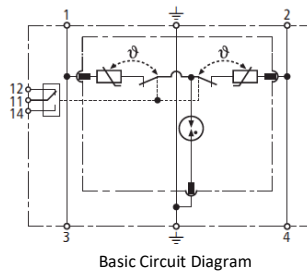
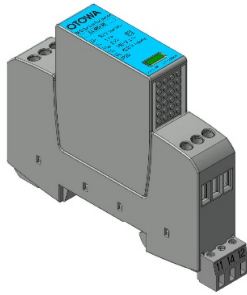


OTOWA Class III (Type3) SPD SL-RM for Control power

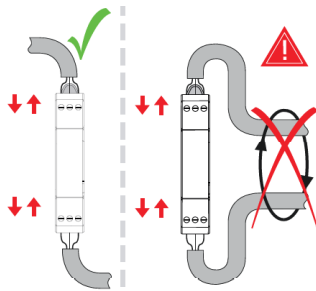
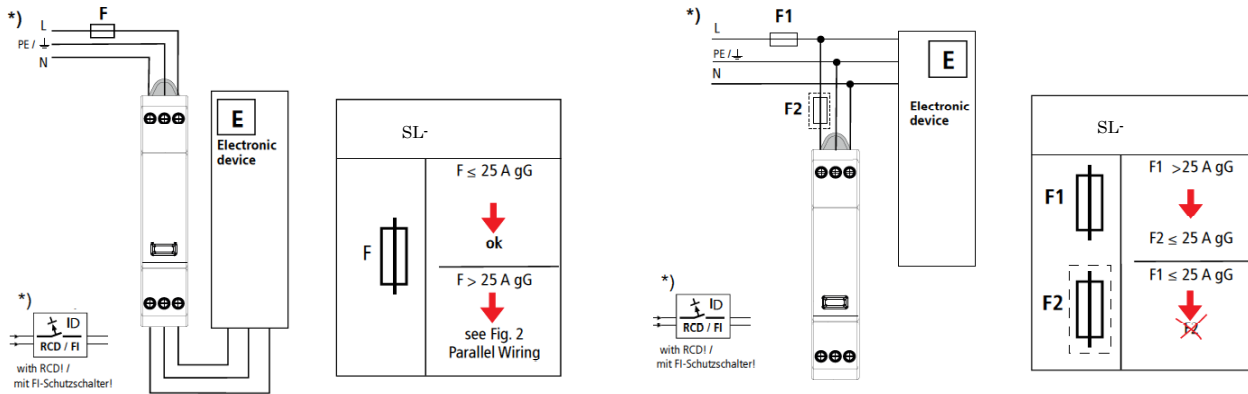
Two-pole SPD consisting of a base part and plug-in protection module; with floating remote signalling contact.



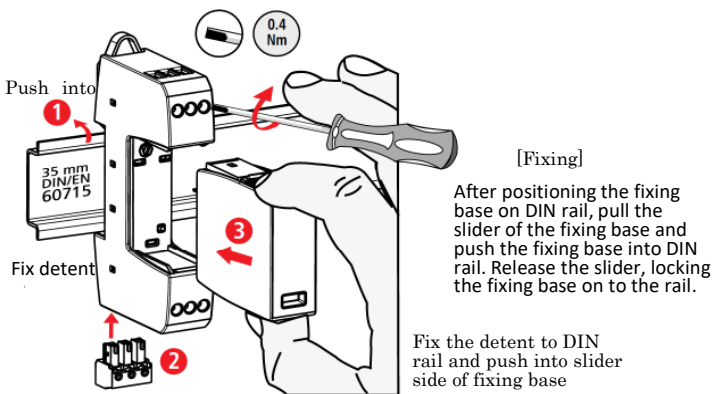
- High discharge capacity due to heavy-duty zinc oxide varistor / spark gap combination
- Energy coordination with LS-series
- Operating state / fault indication by green / red indicator flag in the inspection window
- Narrow (modular) design according to DIN 43880
- Easy replacement of protection modules due to module locking system with module release button
- Vibration and shock-tested according to EN 60068-2.

Type	SL-RM30S	SL-RM60S
SPD according to EN 61643-11 / IEC 61643-11	type 3 / class III	type 3 / class III
Nominal a.c. voltage (UN)	24 V (50 / 60 Hz)	48 V (50 / 60 Hz)
Max. continuous operating a.c. voltage (UC)	30 V (50 / 60 Hz)	60 V (50 / 60 Hz)
Max. continuous operating d.c. voltage (UC)	30 V	60 V
Nominal load current a.c. (IL)	25 A	25 A
Nominal discharge current (8/20 μs) (In)	1 kA	1 kA
Total discharge current (8/20 μs) [L+N-PE] (I _{total})	2 kA	2 kA
Combination wave (UOC)	2 kV	2 kV
Combination wave [L+N-PE] (UOC total)	4 kV	4 kV
Voltage protection level [L-N] (UP)	≤ 180 V	≤ 350 V
Voltage protection level [L/N-PE] (UP)	≤ 630 V	≤ 730 V
Response time [L-N] (tA)	≤ 25 ns	≤ 25 ns
Response time [L/N-PE] (tA)	≤ 100 ns	≤ 100 ns
Max. mains-side overcurrent protection	25 A gG or B 25 A	25 A gG or B 25 A
Short-circuit withstand capability for mains-side overcurrent protection with 25 A gL/gG (ISCCR)	6kA rms	6kA rms
Operating temperature range (TU)	-40 ° C ~ +80 ° C	-40 ° C ~ +80 ° C
Operating state / fault indication	green / red	green / red
Number of ports	1	1
Cross-sectional area (min.)	0.5 mm ² solid / flexible	0.5 mm ² solid / flexible
Cross-sectional area (max.)	4 mm ² solid / 2.5 mm ² flexible	4 mm ² solid / 2.5 mm ² flexible
For mounting on	35 mm DIN rails acc. to EN 60715	35 mm DIN rails acc. to EN 60715
Enclosure material	thermoplastic, Gray, UL 94 V-0	thermoplastic, Gray, UL 94 V-0
Place of installation	indoor installation	indoor installation
Degree of protection	IP 20	IP 20
Capacity	1 module(s), DIN 43880	1 module(s), DIN 43880

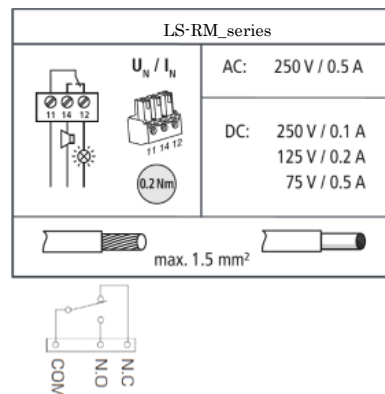
Connection



Installing the fixing base



Deterioration contact terminal



Regular maintenance

During the lightning season and after lightning strikes, maintain the SPD as follows.

Before maintenance, switch off the isolating switch for inspection (or Earth Leakage Current Breaker (ELCB)) on the electric input side of the SPD.

<Pass criteria for SPD>

Replace the SPD main unit if the SPD is under follow condition.

(If the fixing base has also changed color or shape, replace the fixing base.)

○Appearance check

- The plastic housing has changed color or shape.
- Status indicator color.

(After status indicator change red, the SPD cannot be reused.)

○Leakage current check

- Earth Leakage Circuit Breaker (ELCB) has operated any times. (After replacing SPD, confirm the ELCB has no operation.)

Visual indication status

